

User Manual / Installation Guide

18.5" True Flat P-CAP Touch Monitor

Warning! It will cause malfunction if the monitor is operating with unspecified power supply unit or incorrect power voltage. Do not exposure this unit in the rain or moisture environment to reduce the risk of fire or electric shock.

Content:

| | |
|--|----------|
| I. FCC Warning Statement..... | 1 |
| II. Introduction | 2 |
| <input type="checkbox"/> Features..... | 2 |
| <input type="checkbox"/> Unpacking the monitor | 3 |
| III. Installation | 4 |
| <input type="checkbox"/> I/O placement..... | 4 |
| <input type="checkbox"/> To PC | 4 |
| <input type="checkbox"/> Touch Driver installation | 5 |
| <input type="checkbox"/> Control Buttons..... | 7 |
| <input type="checkbox"/> Structure of OSD settings | 8 |
| IV. For your safety | 9 |
| V. Support timing chart:..... | 9 |
| VI. Mechanical Dimension..... | 9 |
| VII. Product General Specification | 9 |



I. FCC Warning Statement

WARNING

Note: This equipment has been tested and found to comply with the limits for a Class B digital device, pursuant to Part 15 of FCC Rules. These limits are designed to provide reasonable protection against harmful interference in a residential installation. This equipment generates, uses and can radiate radio frequency energy and, if not installed and used in accordance with the instruction, may cause harmful interference to radio communications. However, there is no guarantee that interference will not occur in a particular installation. If this equipment does cause harmful interference to radio or television reception, which can be determined by turning the equipment off and on, the user is encouraged to try to correct the interference by one or more of the following measures:

- Reorient or relocate the receiving antenna.**
- Increase the separation between the equipment and receiver.**
- Connect the equipment into an outlet on a circuit different from that to which the receiver is connected.**
- Consult the dealer or an experienced radio/TV technician for help.**

Notice:

- (1) A Unshielded-type power cord is required in order to meet FCC emission limits and also to prevent interference to the nearby radio and television reception. It is essential that only the supplied power cord be used.*
- (2) Use only shielded cables to connect I/O devices to this equipment.*
- (3) Changes or modifications not expressly approved by the party responsible for compliance could void the user's authority to operate the equipment.*

II. Introduction

18.5" True Flat Touch Monitor is color TFT LCD monitor, integrate with projected capacitive touch, suitable for many types of application.

➤ **Features**

- Optimal display resolution 1366 * 768
- VESA 75*75 & 100 * 100 mm wall mount standard
- Durable and sturdy base design
- Adjustable viewing angel freely up to 90 degrees horizontally
- Low power consumption only 20W with LED backlight

➤ Unpacking the monitor

- Put the monitor on a clean surface, make sure the box in upright position.
- Remove packing materials from inside of box.

Check accessory

Please make sure all the accessory are included:

Standard Items

a.



b.



c.



d.



e.



- a. LCD Monitor
- c. USB Touch cable
- e. Power cable

- b. VGA cable
- d. Power adaptor

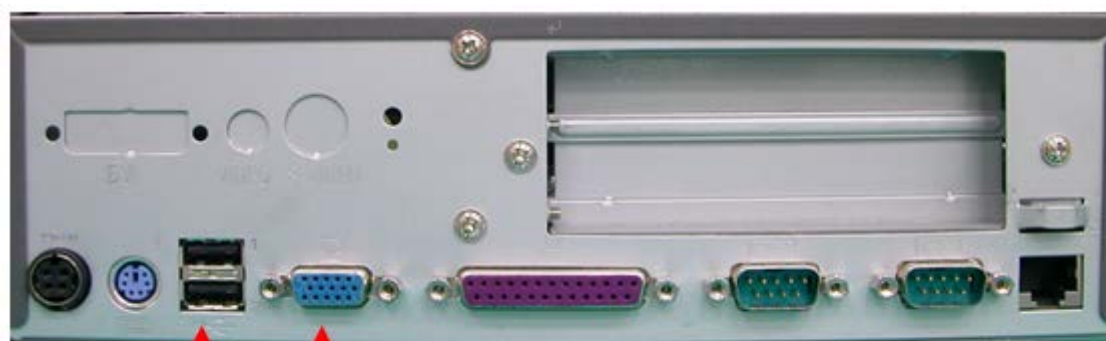
III. Installation

➤ I/O placement



- | | | | |
|---|---------|---|------------|
| 1 | DC JACK | 2 | DVI-D |
| 3 | VGA | 4 | USB B Type |
| 5 | Key Pad | 6 | Audio IN |

➤ To PC

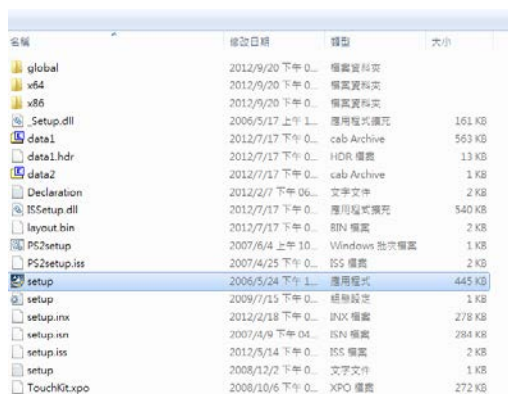


Touch  **VGA** 

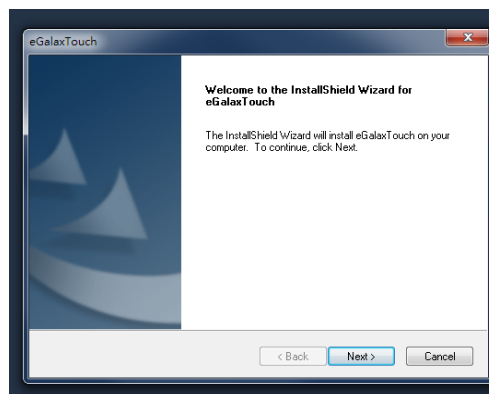
1. Connect VGA cable from monitor to PC
2. Connect USB touch cable to PC
3. Connect DC plug to monitor and the other side to wall outlet

➤ Touch Driver installation

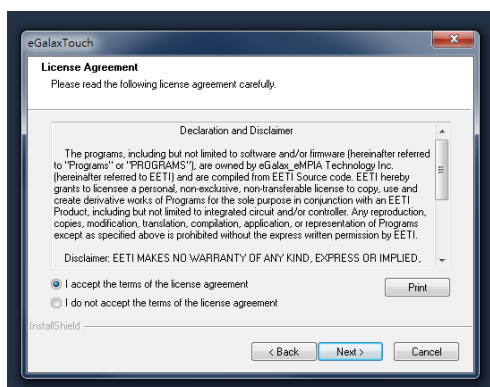
P_CAP_Touch :



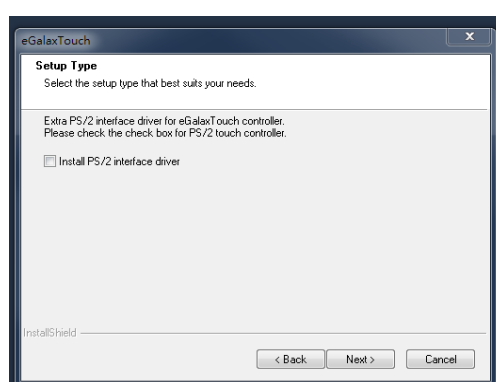
1. Double click “setup.exe” from driver menu



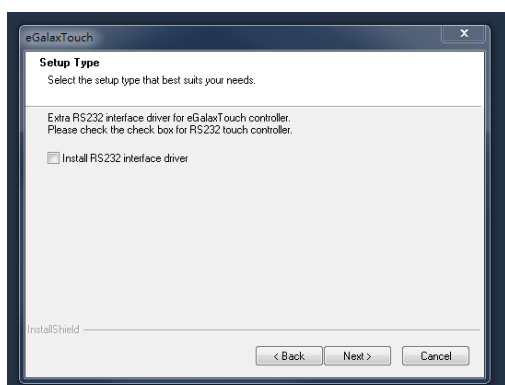
2. Click “Next” to start the setup program of eGalax Touch



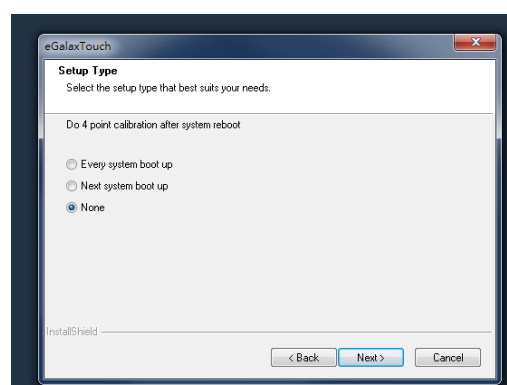
3. Select “I accept the terms of the license agreement” and click “Next” from License Agreement



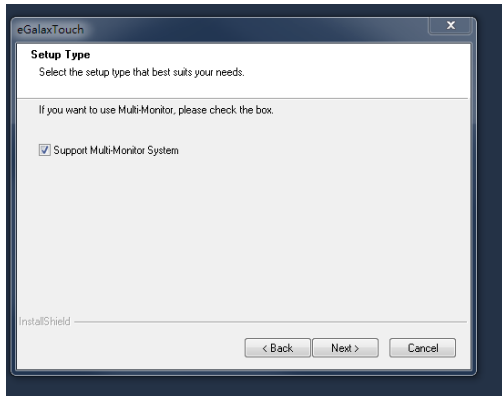
4. Click “Next” from Setup Type



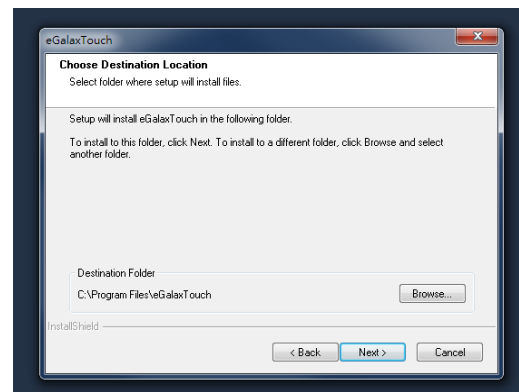
5. Click “Next” from Setup Type



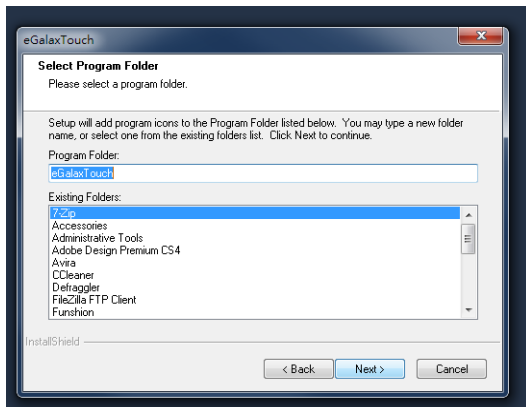
6. Click “Next” from Setup Type



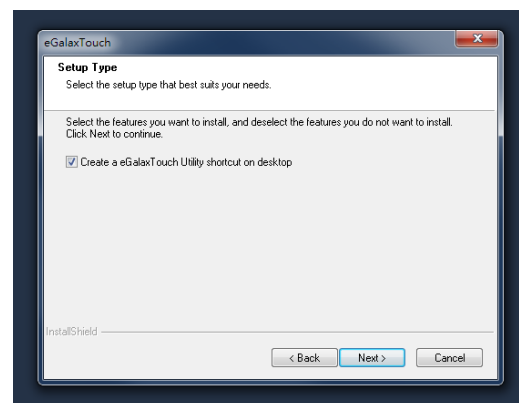
7. Select “Support Multi-Monitor System” and Click “Next”



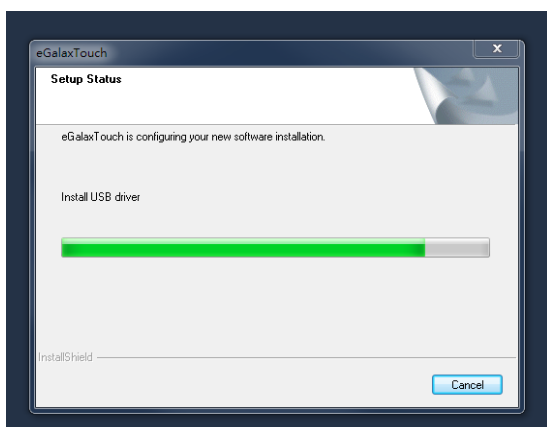
8. “Choose Destination Location” and click “Next”



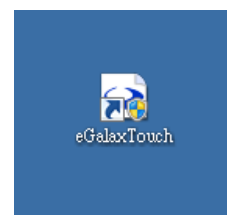
9. “Select Program Folder” and click “Next”



10. Click “Next” to start the eGalax Touch Setup

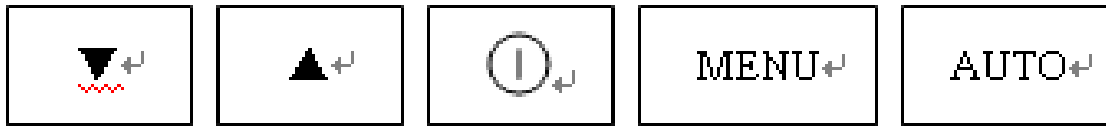


11. eGalax Touch Setup is running



12. Finish and create a eGalax Touch Utility shortcut on desktop

➤ Control Buttons



| | |
|----------------|---|
| Auto Adjusting | <p>a.) Pressing to execute AUTO-Adjusting function. This function will set the monitor display area to the optimal position.</p> <p>b.) Sometimes this function can't achieve the optimal effects. Please follow the manual adjusting procedure.</p> |
| Menu | <p>When the light bar move other item, the key are used to select it, and read to adjust. Press the MENU key to activate the On Screen Display (OSD). Press twice to turn off the OSD. After 30 sec idle times, the OSD screen will automatically turn off.</p> |
| Power | <p>Use the power switch to turn the power ON or OFF. We recommend to turn your system power on first, then the LCD monitor.</p> |
| Up | <p>a.) When OSD mode is activated (When “MENU” key is pressed). The two keys are used to select the adjustment items.</p> |
| Down | <p>b.) When adjustment item is selected, the two keys are defined to decrease or increase the value of each selected item.</p> |

➤ **Structure of OSD settings**

| | First Level | Second Level | Third Level | Operating Procedure |
|-----------|---------------|---|------------------------------|--|
| Main Menu | Auto Adjust | | | Press “UP” or “DOWN” to adjust H-phase & H-position & V-position clock automatically. |
| | Luminance | Brightness Contrast Exit | | Press “UP” key to increase brightness, “DOWN” key to decrease brightness. Press “UP” key to increase contrast, “DOWN” key to decrease contrast. |
| | Geometry | H. Position V. Position Clock Phase Exit | | Press “UP” key to shift screen right, “DOWN” key to shift screen left. Press “UP” key to shift picture upward, “DOWN” key to shift picture downward. Adjust sampling clock of analog to digital converter until clock is equal to pixel frequency of video input. By varying this “UP” “DOWN” control the exact sampling time within the pixel can be adjusted. |
| | Color | 9300K 6500K 5800K | | Press “UP” or “DOWN” to choose three types of color temperature 9300°k, 6500°k and user define. |
| | | User Preset | Red Green Blue Exit | |
| | | Exit | | |
| | OSD | H. Position V. Position OSD Timeout Exit | | Adjust OSD frame horizontal location, press “UP” key to shift frame right, “DOWN” key to shift frame left , timeout and preset OSD. Adjust OSD frame vertical location, press “UP” key to shift frame upward, “UP” key to shift frame downward , timeout and preset OSD. |
| | Language | English French German Italian Spanish Japanese T. Chinese S. Chinese | | Press “UP” or “DOWN” to choose any one of the following language, English, French, Germany, Italy, Spain , Japanese, Traditional Chinese and Simplified Chinese. |
| | Recall | Color Recall Recall All Exit | | Recall the default value. |
| | Miscellaneous | Sharpness Display Information Exit | | Press “UP” key to increase sharpness, “DOWN” key to decrease sharpness. |
| | Exit | | | |

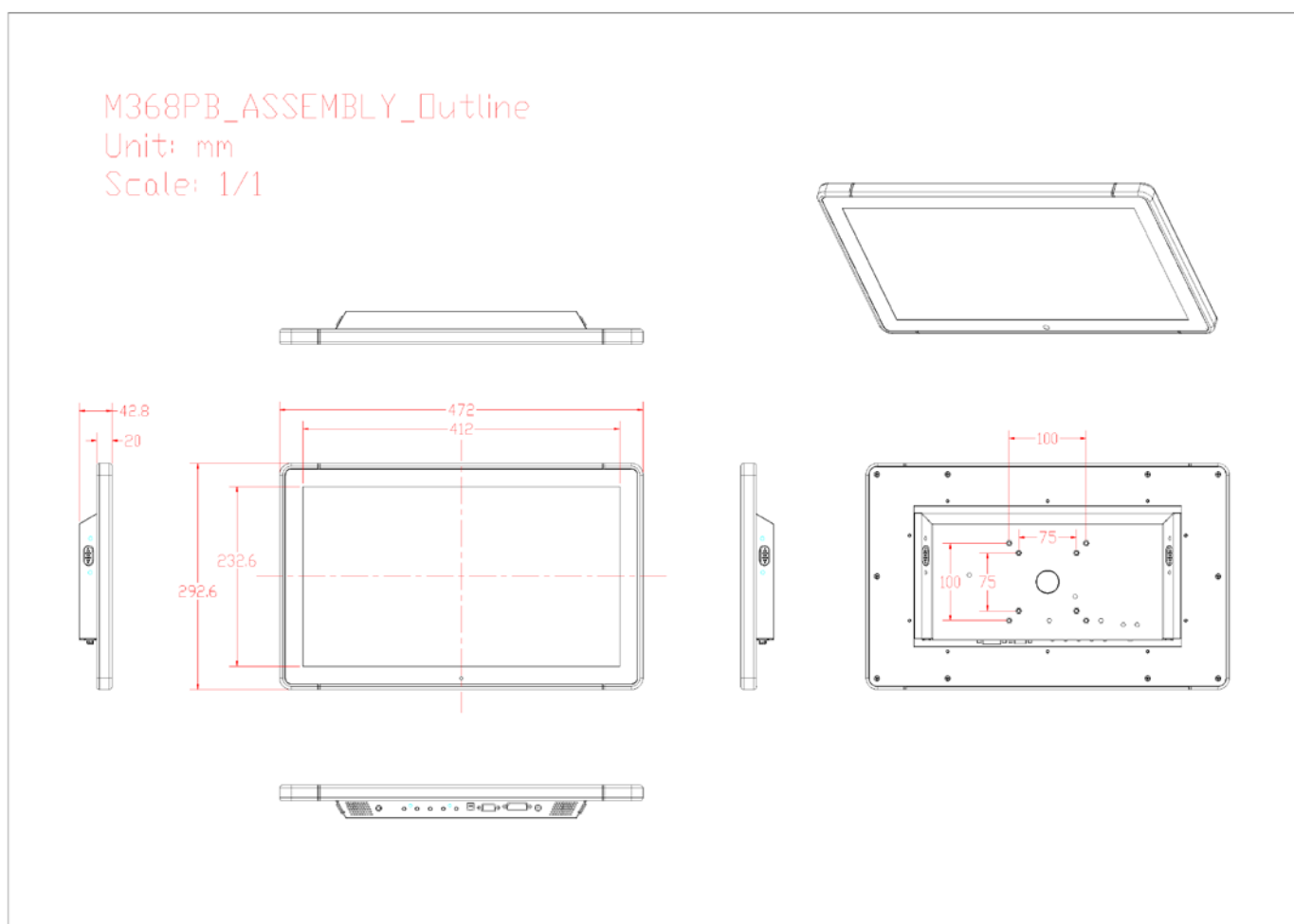
IV. For your safety

1. When move the monitor, always switch off power and disconnect all cables to avoid any danger.
2. Please use the power and signal cables correctly when install or bend it.
3. In case of notice any abnormal smell or noise, please stop operation and call the nearest dealer or service center.

V. Support timing chart:

| Timing Mode | Reference Standard | Resolution | Pixel MHz | FH KHz | FV Hz | Interlace | H Polarity | V Polarity |
|-------------|--------------------|------------|-----------|--------|-------|-----------|------------|------------|
| Mode 1 | VESA | 1366*768 | 85 | 47.7 | 60 | NO | + | + |

VI. Mechanical Dimension



VII. Product General Specification

| Model | 18.5" LCD Touch Monitor (1850TSD) |
|------------------------------|--|
| Cabinet color | Black |
| Display size | 18.5.0" |
| Active Area | 409.8 * 230.4 mm |
| Optimal Resolution | 1366 * 768 |
| Color Arrangement | RGB Vertical Stripe |
| Brightness (Panel) | 250 cd/m ² (typ) |
| Contrast Ratio | 1000:1 |
| Response Time | 5 ms (typ) |
| Viewing Angle | 170 degrees (H) 160 degrees (V) |
| Input Video Format | VGA/DVI |
| Input Video signal connector | D-Sub 15 pins + DVI-D |
| Touch Panel | Projected capacitive |
| Touch Interface | USB |
| Power consumption | 20W |
| Input Frequency | Horizontal : 31.5 kHz~60.2 kHz Vertical : 56.3Hz~75Hz |
| Power supply | DC 12V +/- 10% |
| Temperature | Operating : 0℃~40℃ Storage : -10℃~50℃ |
| Humidity | Operating : 20%~80% Storage : 10%~90% |
| Weight | 5.86Kg(net) |
| Approvals | CE, FCC,LVD |
| Wall Mount | VESA 100 * 100 mm |