

# User Manual / Installation Guide

## Model No. 104OTS

**Warning!** Malfunctions are possible if the monitor is operated with an unspecified power supply adaptor or incorrect power voltage. Do not expose this unit to rain or a moist environment to reduce the risk of fire or electric shock.

### PRECAUTIONS

- Do not use the monitor near water.
- Do not place the monitor on an unstable cart, stand, or table. If the monitor falls, it can injure a person and cause serious damage to the appliance. Use only a cart or stand recommended by the manufacturer or sold with the monitor. If you mount the monitor on a wall or shelf, use a mounting kit approved by the manufacturer and follow the kit's instructions.
- The monitor should be operated with the type of power adaptor indicated on the label. Normally it is packed with monitor, or use an adaptor approved by the manufacturer.
- Unplug the unit during a lightning storm or when it will not be used for long periods of time. This will protect the monitor from being damaged due to power surges.
- Never spill liquids on the monitor.
- Do not attempt to service the monitor yourself; opening or removing the cover can damage the monitor or panel. Please refer all servicing to qualified service personnel.
- For Wall mount adaptors, the wall socket shall be installed near the equipment and should be easily accessible.



## Index:

<b>I.</b>	<b>Introduction</b>	<b>3</b>
	Features	3
	Unpack the monitor	3
	Check Accessories	3
<b>II.</b>	<b>Installation</b>	<b>4-6</b>
	Power Supply & Signal connection	4
	Capacitive Touch Key Control	4
	Structure of OSD settings	5
<b>III.</b>	<b>For your safety</b>	<b>6</b>
<b>IV.</b>	<b>Support timing</b>	<b>6</b>
<b>V.</b>	<b>Resistive Touch Panel</b>	<b>6~10</b>
	Touch Driver installation	6~10
<b>VI.</b>	<b>Mechanical dimension</b>	<b>11</b>
<b>VII.</b>	<b>EMC Warning Statement</b>	<b>12</b>
	FCC Class A Warning	12
	CISPR 22 class A Warning	12
<b>VIII.</b>	<b>Product General Specification</b>	<b>13</b>

## I. **Introduction**

- This monitor produces clear images with vivid colors at resolutions from VGA up to XGA. It uses a graphics adapter of scanning frequency from 30KHz to 82KHz in horizontal sweep while vertical refresh rate is 56Hz to 76 Hz continuously.
- On Screen Display provides flexibility with simple & user-friendly controls.
- Integrated D-sub and HDMI inputs provide flexible connectivity for high-definition multimedia devices and gaming consoles
- Optional built-in 2W x2 Speakers
- USB interface 5-Wire Resistive Touch Panel
- 1040TS: 10.4" panel with VGA & HDMI input, and 5-Wire Resistive touch screen.

### ➤ **Features**

- 10.4 inch diagonal screen with native display resolution 800 \* 600
- Dual Video input: VGA, HDMI
- Full flat front panel with high quality resistive touch panel
- Rimless front bezel design; IP54 spill & dust proof
- Cable management down routing through the mounting stand
- Light weight, only 1320g physically
- 5 Wire Resistive Touch Panel Control Function
- Mitsubishi PMMA cover lens for P104MG

### ➤ **Unpack the monitor**

- Put the monitor on a clean surface; make sure the box is in an upright position.
- Remove packing materials from inside of box.

### ➤ **Check accessories**

Please make sure the all accessories are included:



1.8 meter VGA 15 pin  
D-sub Video cable



Power Adaptor



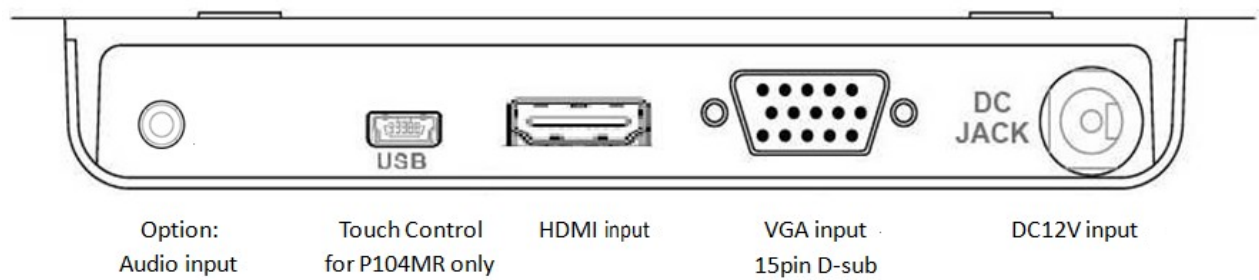
USB cable for P104MR

## II. Installation:

### ➤ **Power Supply & Signal connection:**


Power supply: Use DC 12Vdc power.

HDMI signal: Apply HDMI signal



### ➤ **Capacitive Touch Key Control /Connectors**



Power (  )	Use the power switch to turn the power ON or OFF. We recommend turning your system power on first, then the LCD monitor. Press power key to turn on and Press again for 2~3sec. to power off monitor
Auto Adjust (AUTO)	a. Press to execute AUTO-Adjusting function. This function will optimize the display image. b. Sometimes this function can't achieve the optimal effects. Please follow the manual adjusting procedure. c. After the OSD menu is activated, pressing this key can turn off the OSD menu.

Menu (MENU)	<p>a. Press Menu key to activate OSD Menu</p> <p>b. This key also registers “OK”; Press “Up, Down” key to move the indicator to the desired item, then press Menu key to select and read to adjust. After adjustment, press this key to return to the previous Menu.</p>
Up ( ▲ )	<p>a. When OSD mode is activated (When “MENU” key is pressed), these two keys are used to select the adjustment items.</p> <p>b. When adjustment item is selected, these two keys are defined to decrease or increase the value of each selected item.</p> <p>c. Direct access “Up” Key will reveal Brightness OSD for adjustment. Direct access “Down” key will reveal Volume OSD for adjustment.</p>
Down ( ▼ )	

➤ **OSD Lock / Unlock :**

Pressing the “Menu” Key for more than 7 seconds shall lock all control keys function.

After keys locked, press “Menu” key again for more than 7 second to unlock the key function.

➤ **Structure of OSD settings**

Man Menu:

	Level 1	Level 2	Level 3	Operating Procedure
Main Menu	Auto Adjust			Press “UP” or “DOWN” to adjust H-phase & H-position & V-position clock automatically.
	Luminance	Brightness		Press “UP” key to increase brightness, “DOWN” key to decrease brightness.
		Contrast		Press “UP” key to increase contrast, “DOWN” key to decrease contrast.
		Sharpness		Press “UP” key to increase image sharpness, “DOWN” key to decrease image sharpness.
		Exit		Exit to previous Menu
	Management	H. Position		Press “UP” key to shift screen left, “DOWN” key to shift screen right.
		V. Position		Press “UP” key to shift picture upward, “DOWN” key to shift picture downward.
		Pixel Clock		Reduces any vertical bars or strips visible on the screen background. Adjusting the Clock will also change the horizontal screen image width
		Phase		Removes any horizontal noise and clears or sharpens the image of characters.
		Exit		Exit to previous Menu
	Color	9300K 6500K 5400K		Press “UP” or “DOWN” to choose three types of color temperature 9300°k, 6500°k, sRGB and user define.
		User Preset	Red Green Blue Exit	Select User Preset to enter Color Adjust Menu, Select desired color to adjust
		Exit	–	Exit to Main Menu
	OSD	H. Position		Adjust OSD Menu horizontal position, press “UP” key to shift Menu right, “DOWN” key to shift Menu left
		V. Position		Adjust OSD Menu vertical position, press “UP” key to shift Menu upward, “DOWN” key to shift Menu downward
		OSD Time	–	Sets the time duration in seconds that the OSD is visible after the last button is pressed.
		Exit		Exit to previous Menu
	Language	English Francais Deutsch Italino	–	Press Up/Down key to move OSD bar to desired language, Then press to confirm, the OSD Menu will change to desired language and return to Main Menu.

		Espanol 日本語 繁體中文 简体中文 Portuguese 한국어 русский		
Main Menu	Recall	Recall color	Yes	Press "Yes" to reset Color to factory setting
		Recall All	No	Press "Yes" to set all settings back to factory setting, except language
		Exit	No	Press "Ext" to return to Main Menu
	Information	Display information	–	Press Display information to display resolution and refresh rate
		Exit		Press "Exit" to return to Main Menu
	Ext	–	–	Pressing "Exit" key will close OSD Menu and save the settings

Source Select Menu: Direct pressing "Down" key can select video source

VGA
HDMI

### III. For your safety

1. When moving the monitor, always switch off power and disconnect all cables to avoid any danger.
2. Please use the power and signal cables correctly when installing.
3. In case of any abnormal smell or noise, please stop operation and call the nearest dealer or service center.

### IV. Support timing chart:

Timing Mode	Reference Standard	Resolution	Pixel MHz	FH KHz	FV Hz	Interlace	H Polarity	V Polarity
Mode 1	VESA	800×600	36.000	35.156	56.250	NO	+	+
Mode 2	VESA	800×600	40.000	37.879	60.317	NO	+	+
Mode 3	VESA	800×600	50.000	48.077	72.188	NO	+	+
Mode 4	VGA	640 x 480	25.17	31.47	59.94	NO	–	–
Mode 5	VGA	720 x 400	28.32	31.47	70.08	NO	–	+
Mode 6	VESA	1024 x 768	65.000	48.363	60.004	NO	–	–

### V. Resistive Touch Panel:

Panel:

Type : Five-Wire Analog Resistive

Input Mode : Five-Wire Analog Resistive

Transparency : 80% +/- 5%

Build-in Touch Control Module

(Note: For Panel Touch Control, user needs to connect upstream cable to System PC)

Control type : USB

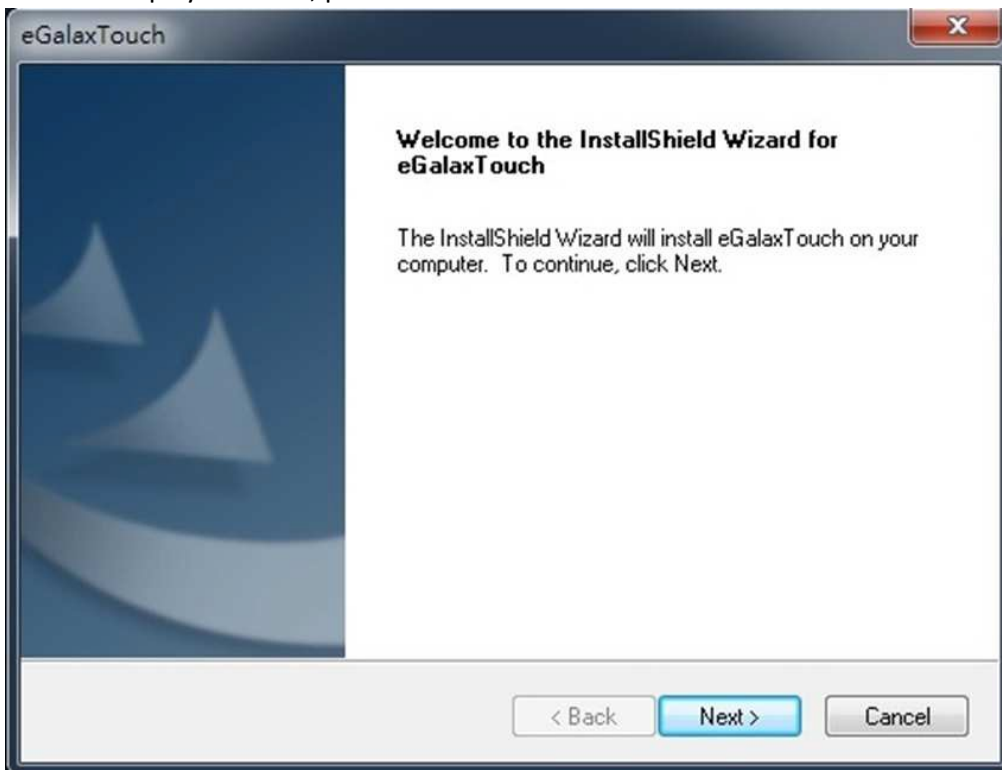
Touch Control Driver : eGalax Touch Drivers



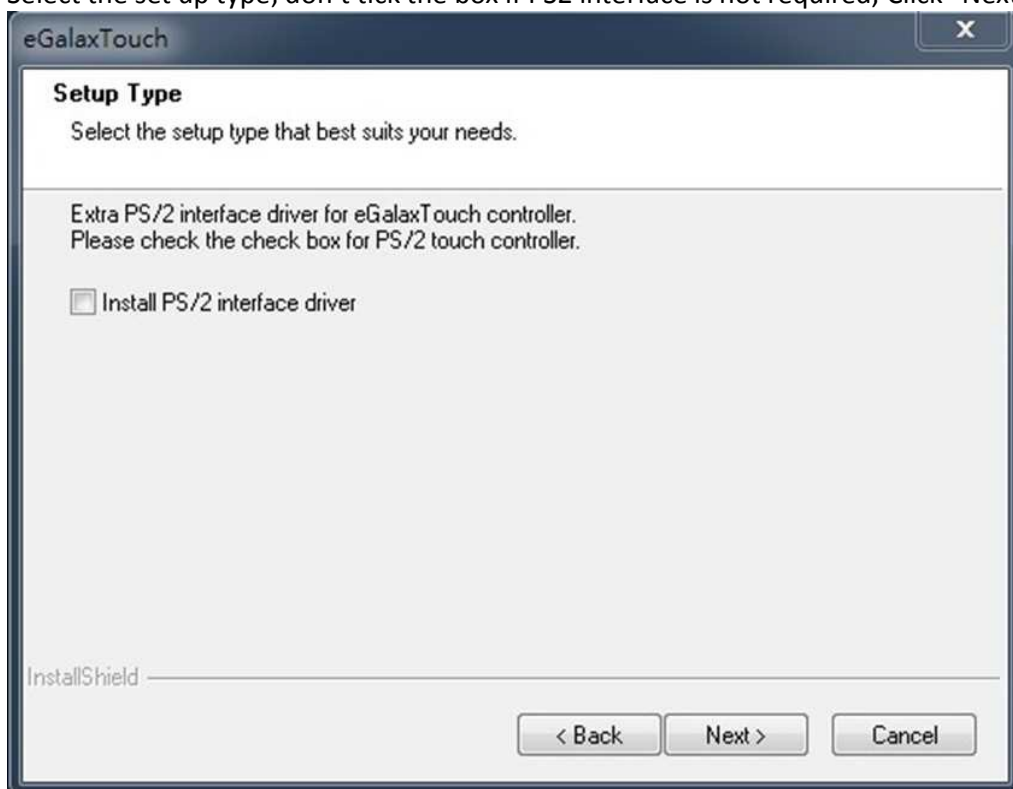
Touch Driver installation:



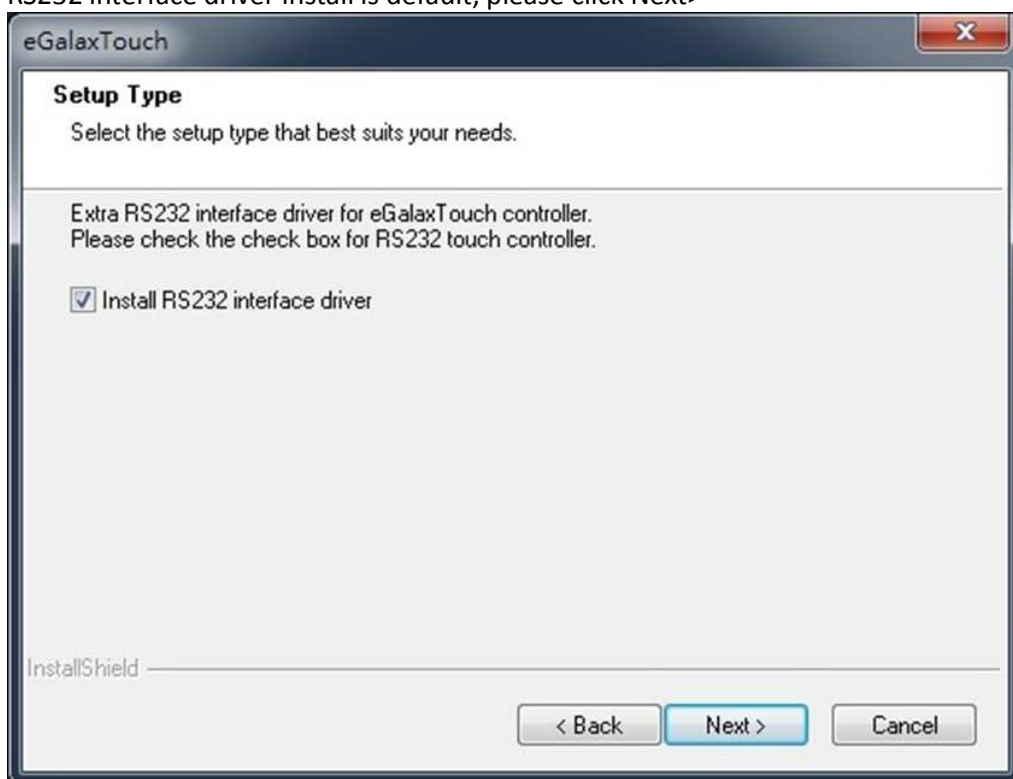
1.0 Screen display as below, please click Next>.



2.0 Select the set up type; don't tick the box if PS2 interface is not required, Click "Next>

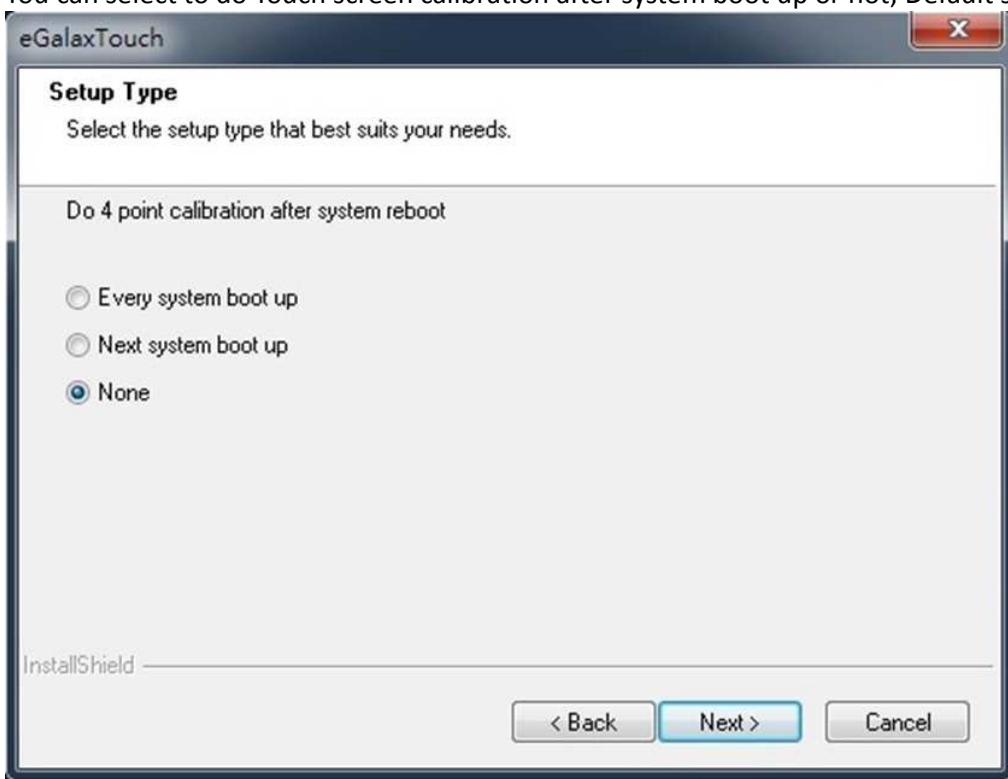


3.0 RS232 interface driver install is default, please click Next>

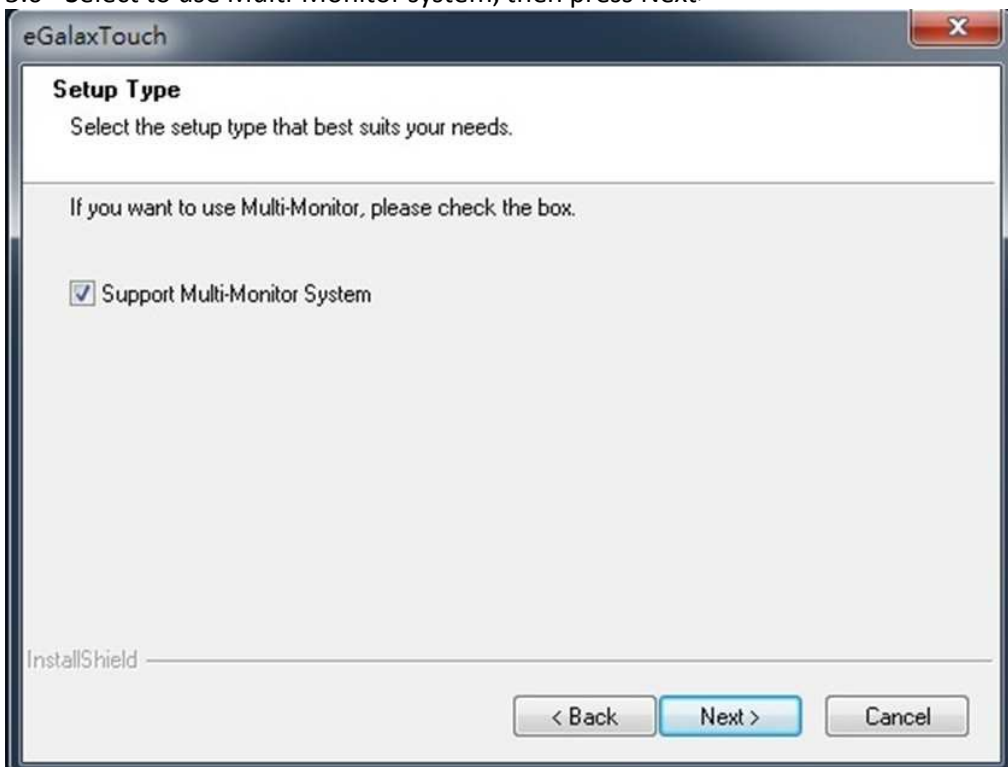




4.0 You can select to do Touch screen calibration after system boot up or not; Default setting is "None"

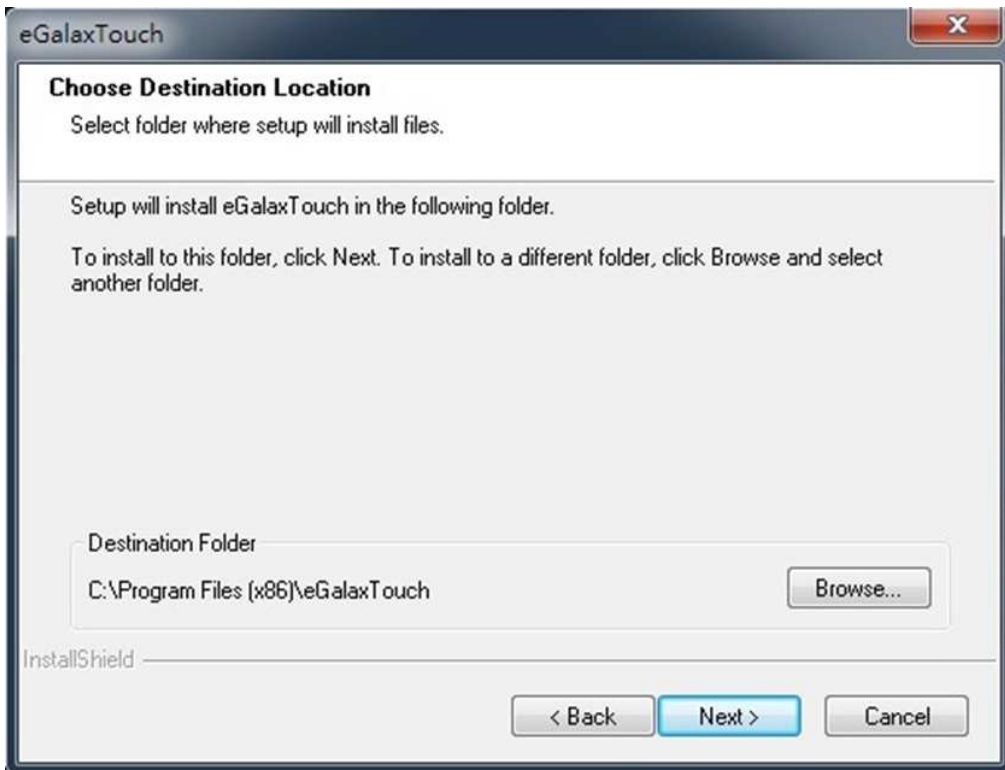


5.0 Select to use Multi-Monitor system, then press Next>

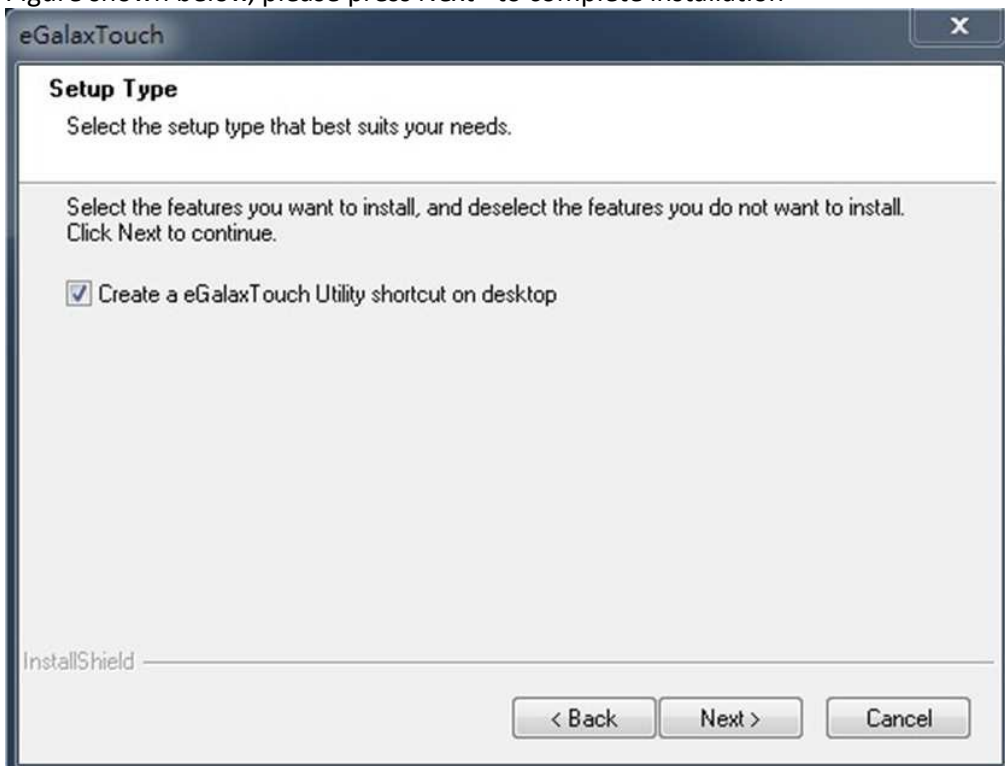


6.0 Choose destination location; default folder location shown as below.

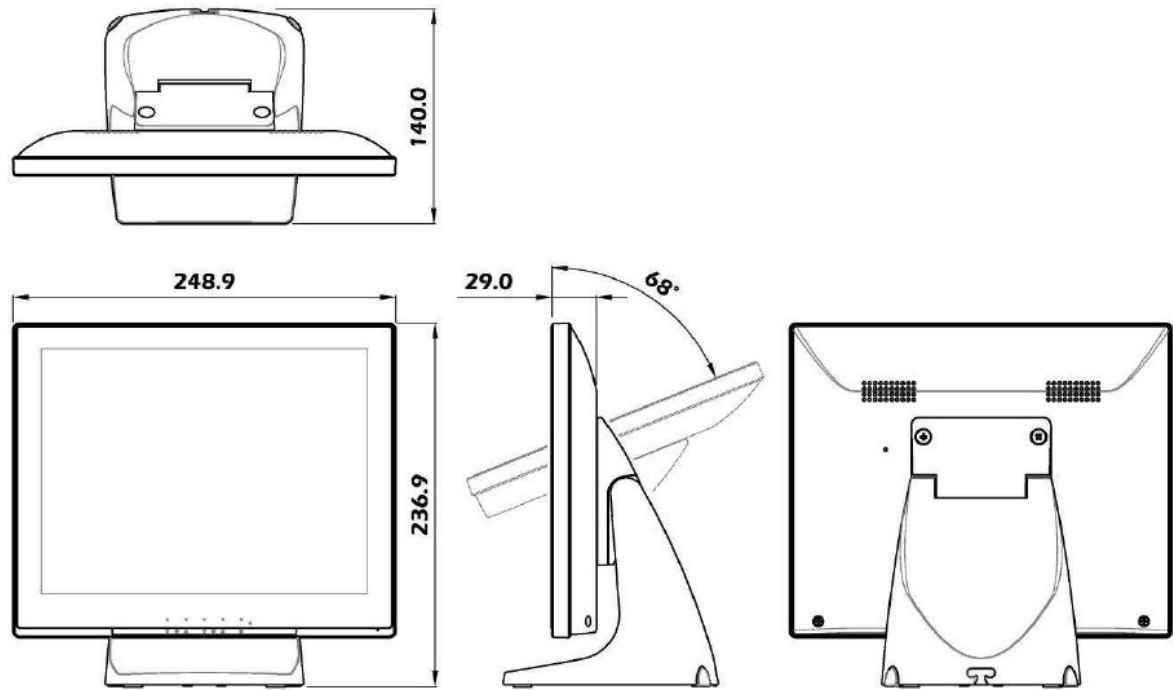
Press Next>



7.0 Figure shown below, please press Next> to complete installation



VI. Mechanical dimension



VII. EMC Warning:

## FCC Class A Warning



### **Warning**

This equipment has been tested and found to comply with the limits for a Class A digital device, pursuant to Part 15 of the FCC Rules. These limits are designed to provide reasonable protection against harmful interference when the equipment is operated in a commercial environment. This equipment generates, uses, and can radiate radio frequency energy and, if not installed and used in accordance with the instruction manual, may cause harmful interference to radio communications. Operation of this equipment in a residential area is likely to cause harmful interference in which case the user will be required to correct the interference at his own expense.

## CISPR 22 Class A Warning



### **Warning**

---

**This is a class A product. In a domestic environment this product may cause radio interference in which case the user may be required to take adequate measures.**

---

# **VIII. Product General Specification:**

Model	P104MR/P104MG	
LCD panel		
Display size	10.4"	
Display Area	211.2mm x 158.4mm	
Optimal Resolution	800 * 600 / 1024*768	
Brightness	300 cd/m <sup>2</sup> (typ)	
Contrast Ratio	500:1(typ)	
Response Time	30 ms (typ)	
Viewing Angle	V: 50 /60 , H: 75 /75	
Video	VGA Signal input connector	15pin Miniature D-sub
	HDMI Signal connector	19 pin HDMI
	Signal cable	1.8meter VGA cable
		HDMI cable (Optional)
Power supply	Adaptor	Wall mount type power adaptor
Input Frequency		Input: 100~240AC 0.9A, Output: 12Vdc 1.5A
		H: 30 - 62kHz ; V: 55-76Hz
Cover Lens		Mitsubishi PMMA Hardness>5H
P104VG Only		(JIS D0202),T > 90%
Resistive Touch Panel (P104MR only)	Type	ive-Wire Analog Resistive
	Input Mode	Stylus or Finger
	Touch Control type	USB
	Touch Control Driver	eGalax Touch
	Touch control cable	1.8 meter cable; one end with Mini USB B type connect to monitor, the other end is USB A type connect to Host PC
Temperature		Operating : 0°C~40°C ; Storage : -10°C~50°C
Weight		1320g (net)
Physical Dimension		248.9 x 236.9 x 140 (mm)
Approvals		CE, FCC
Wall Mount type		VESA 75 * 75 mm
Optional item		
	Color	White

\*Product specifications may be changed without prior notice

\*Made In Taiwan