



## 706 SERIES INSTALLATION MANUAL



Model Comparison Chart

	706YSA	706TSA
DVI-D Inputs	1	1
VGA (D Sub 15) Input	1	
VIDEO (RCA) Inputs	2	1
AUDIO (RCA) Inputs	Mono	Mono
Built-In Speakers	●	●
High Quality Scaling	●	●
High Quality Anti-aliasing	●	●
Auto Power On	●	●
Touch Screen	○	●

● Standard

○ Not Available

Features

- For In-Car Computing, PC, Server, GPS various VGA Use
- 5-wire Resistive Touch Screen (USB)
- Multi-Monitor Touchscreen Support
- DVI-D Input
- VGA Input (15 pin D-SUB) x 1
- Video Input x 2
- Audio Input / Built-in Speaker
- NTSC / PAL Multi-System
- 16x9 Aspect Ratio
- High Resolution Display - up to 1024 x 768
- Upgraded High-Brightness LCD
- Adjustable backlight level for night-time use
- Pixelwork High Performance Image and Video Signal Processor
- AISS - Advanced Image-Scaling and Shaping
- 16:9/4:3 Scaler Settings (Auto, Fill All, 1 to 1, Normal, Zoom, Wide )

- Last Input memory
- Last Power Setting memory
- IR Remote Control
- Auto power-on upon signal detection
- Automatic display adjustment
- On Screen Display Control
- Stand: 360° / Height Adjustment
- 26-Pin heavy-duty connector
- 20-Pin Customized Monitor Connector
- Anti Glare Coating
- Supports 11V ~ 24V DC
- "E" Mark Certified for Automotive use

## Specifications

### Display Specifications:

- Screen Size: Diagonal 7" (16:9)
- Physical Resolution: 800 (H) x 480 (V)
- Pixel Pitch: 0.0074 (H) x 0.0074 (V) (in)
- Dot Resolution: 2400 x 480 = 1,152,000 (dots)
- Supported Resolution: 640 x 480 ~ 1024 x 768
- Supported Refresh Rate: 60 ~ 75Hz
- LCD Panel Brightness: 650 cd/m<sup>2</sup>
- Contrast Ratio: 300 : 1
- Response Time: 6 - 10 ms
- Viewing Angle: V40 - H70
- Colors: 18-bit (262,144 Colors)

### Physical Specifications:

- Video Source Input
  - RGB analog male connector (15-Pin D-SUB) x 1
  - RCA composite video female connector x 2
- Audio Source Input
  - RCA audio female connector x 2
- Touch Panel I/O
  - USB connector x 1
- Power Source Input
  - Single 12V DC\_IN (Supports 11V ~ 24V)
- External Buttons Input
  - OSD buttons for Power / Menu / Select / Increase / Decrease
  - PWR button for power switch
- Dimension (In) : 6.4 W x 4 H x 0.5 D
- Weight (lb): 0.53

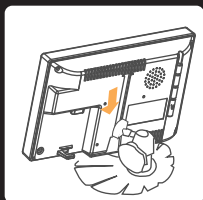
### Electrical Specifications:

- Operating Voltage Range: DC 11V~24V, 1A
- Power Supply: DC 12V
- Power Consumption:
  - Standby mode < 0.3W
  - Suspend mode < 3W
  - Continue mode < 4W (w/o inverter), < 8W (w/ inverter)
- Inverter output specifications:
- Power supply: +12V
- Lamp frequency: 50KHz
- Power consumption: < 5W

### Other Specifications:

- Operating Temperature: -22°F ~ 185°F
- FCC, CE, E8, ROHS Certification
- 18 Month Warranty

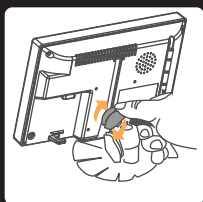




### Optional Mounting Stand

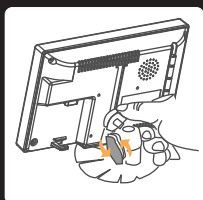
#### Step1.

Slide Monitor into optional mounting stand



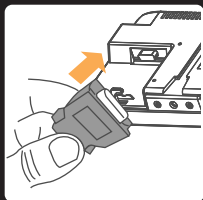
#### Step2.

Secure "Height" position by adjusting Knob



#### Step3.

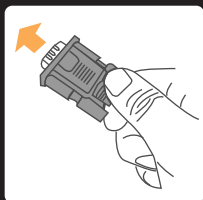
Secure "Tilt" position by adjusting knob



### Create VGA Source

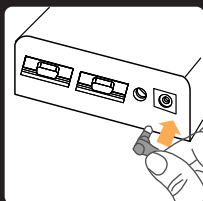
#### Step1.

Attach the 20-Pin connector to the back of the monitor



#### Step2.

Attach the D-Sub 15-Pin connector to your computer's analog VGA output connector



### Create Power Source

Insert Power Adapter as shown



## Create Audio / Video Source

### Step1.

Attach your "video source one" (e.g.VCR, video Game Console) to the Yellow RCA connector marked Video 1.



### Step2.

Attach your "video source two" (e.g. Rear View camera) to the Yellow RCA connector marked Video 2.



### Step3.

Attach your "audio source" to the white/red RCA connector. The sound will be output through the monitor's internal speaker.



### Step4.

Attach your " pc source" to the back VGA connector.



### Step5.

Attach your " pc source" to the back earphone connector.



## Touchscreen Installation (706TSA Only)

### Step1.

Install the Touchscreen driver from the included CD disk. Please follow the installation instruction on page 10.



### Step2.

Attach the USB plug to your computer's USB connector.

## Congratulations

Your monitor is now ready for use.

### Function

1. AV input x 2
2. DVI-D input x 1
3. VGA+AUDIO input x 1
4. DVI and VGA share a sound passway
5. PC/AV PIP/POP function
6. Automatic sensitization function
7. Remote control
8. Electric mode in the province: It will be turn off TFT LCD power and poor light when no signal in 3 minutes.
9. Supply: 12V / 3A Max operating current:2A

Please make sure that signal line and monitor are connected and fixed.

Then insert the electricity to start the machine. Press the POWER can be open and close.

### Hot Keys description:

1. Power key: ON/OFF
2. Select key: This button lets you select the internal signal. Press left (◀) or right (▶) key to move cursor choice input source then press MENU key to enter.
3. MENU key: Stands for Menu. This button is show OSD menu and press up / down key to move cursor. Then press menu key leave again. Press select key to move cursor and press up / down select menu argument or function.
4. Down key: This button can decrease volume directly.
5. Up key: This button can increase volume directly.

### Sensor light description:

Auto sensor can set poor light in the menu of TFT LCD.

### Source menu input description:

1. VGA: Use the computer input source only.
2. COMPOSITE AV1 : CVBS / AUDIO 1 input
3. COMPOSITE AV2 : CVBS / AUDIO 2 input
4. DIGITAL: The computer source ( DVI-D ) input.
5. SHOW SRC: To measuring input source when ALL / ACTIVE is selected. In ALL mode will light. In ACTIVE mode will cover no to connect signal chose.

## Remote Control



1. **Power Button:** On / Off
2. **Mirror Button:** Set the display mode by pressing the image mirror or not. You can use " UP / DOWN / RIGHT / LEFT button to mirror selection.  
Default is Off.
3. **Dimmer Button:** Set the dimmer mode by pressing the image light and shade.
4. **Mute Button:** The will be indicated by mute on the display and press the button again to restore audio.
5. **Display Button:** Set the Audio and Video signal.
6. **Sleep Button:** Pressing the sleep mode that you can select " 30 -60-90-120-150-180 minute or open / close selection.
7. **Picture Button:** The hot key available the image shining / custom / standard / soft.
8. **PC Auto Button:** In PC input mode input signal than PC image can be auto selection.
9. **Menu Button:** Press the menu button to adjust your preference, the following system OSD will be shown. Press the menu button again to leave setting.
10. **Source Button:** Press the source button to set source mode. Use to " UP / DOWN button to move cursor choice input source.
11. **Vol- / Vol+ Button:** Adjust volume to decrease or increase.
12. **PIP Button:** Press the PIP button to adjust PIP display. Press the PIP button again to leave setting.
13. **SWAP Button:** Press SWAP button can change main and subsidiary menu directly.  
In POP source can change right / left image directly.
14. **Up / Down Button:** UP / DOWN button to move cursor choice.
15. **Right / Left Button:** In menu mode, Use main OSD and argument function only.
16. **Enter Button:** Press enter button, the selected will start playing.

### In PC mode menu

#### On Screen Display functions "Picture" description:

In AV1/AV2 input Mode (There are two OSD in the AV1/AV2 mode):



#### 1. PICTURE: The picture of the picture is adjusted.

- **Brightness:** Adjust brightness by pressing the Increase (▶)/Decrease (◀) buttons. Increase the number for higher brightness. Decrease the number for lower brightness. The range is from 0 to 100.
- **Contrast:** Adjust contrast by pressing the Increase (▶)/Decrease (◀) buttons. Increase the number for higher contrast. Decrease the number for lower contrast. The range is from 0 to 100.
- **Phase:** Image flicker can be adjusted by halftone phase adjustment. That can regulate the picture centre. (DVI does not have this one)
- **Frequency:** Frequency is adjusted. Adjust the Frequency mode by pressing the image remove of left and right sides. (DVI does not have this one)
- **Sharpness:** Sharpness definition is adjusted, the range is from 0 to 015, the greater number value is clearer.
- **Color temp:** PC (R, G, B) are adjusted, three base color can do it from 0 to 256 color.
- **Backlight:** Adjust backlight by pressing the Increase (▶)/Decrease (◀) buttons. Increase the number for higher backlight. Decrease the number for lower backlight. The range is from 0 to 100.
- **Auto sensor:** Automatic to adjust screen sensor and environment light switch. The sensor can be closed / the enable can be open.

#### On Screen Display functions "IMG.ADJ" description:

#### 2. IMAGE: The picture of the img.adj is adjusted.

- **Image.SIZE:** Set the display mode to Full / Full ASPECT(16:9/4:3)/1TO1(1:1). Set it to 4:3 if your video signal is in 4:3 aspect ratio and you don't want the display to be stretched out. Default is 16:9.
- **Freeze FRAME:** Static picture switch.
- **Horizontal:** Adjust Horizontal position by pressing the Increase (▶)/Decrease (◀) buttons.
- **Vertical:** Adjust Vertical position by pressing the Increase (▶)/Decrease (◀) buttons.

## On Screen Display functions "SETUP" description:

### 3. SETUP: The picture of the setup is adjusted.

- SLEEP TEINER: Automatic shut-down is established. Adjust time that can establish as 30-60-90-120-150-180 minutes of AUDIO menus.
- VOLUME: You can adjust volume from 0 to 100.
- MUTE: Press once to mute all system audios, As long as the mute function is active, "Mute" will appear on the screen. Press again to turn mute off.

## On Screen Display functions "SOURCE PIP/POP" description:

1.LAYOUT: Press to move down key in a menu, press the right key to select the input signal (SINGLE), (PIP), (POP) in WINDOW LAYOUT. Press again to turn MENU finish setting.

2.Press the down key again, to move cursor to MAIN WINDOW SOURCE one, then press the right key to choose sub-menu that there are DIGITAL , ANALOG , COMPAN , COMP AVI inside.

## VIDEO mode menu

### On Screen Display functions "PICTURE" description:

In AV1/AV2 input Mode (There are two OSD in the AV1/AV2 mode):



### 1.PICTURE: The picture of the picture is adjusted.

- Brightness: Adjust brightness by pressing the Increase (▶)/Decrease (◀) buttons. Increase the number for higher brightness. Decrease the number for lower brightness. The range is from 0 to 100.
- Contrast: Adjust contrast by pressing the Increase (▶)/Decrease (◀) buttons. Increase the number for higher contrast. Decrease the number for lower contrast. The range is from 0 to 100.
- Sharpness: Sharpness definition is adjusted, the range is from 0 to 015 , the greater number value is clearer.
- Color: Adjust color by pressing the Increase (▶)/Decrease (◀) buttons. Increase the number for higher color. Decrease the number for lower color. The range is from 0 to 100.
- Tint: Adjust tint by pressing the Increase (▶)/Decrease (◀) buttons. Increase the number for higher tint. Decrease the number for lower tint. The range is from 0 to 100.

## 11 | Hardware Installation

- **COLOR TEMP:** Press the down key to move cursor to color temp, then press the right key to adjust base color.

R E D : 000 to 256  
G R E E N : 000 to 256  
B L U E : 000 to 256

- **Backlight:** Adjust backlight by pressing the Increase (▶)/Decrease (◀) buttons. Increase the number for higher backlight. Decrease the number for lower backlight. The range is from 0 to 100.
- **Auto sensor:** Automatic to adjust screen sensor and environment light switch. The disable be close / the enable be open.

### On Screen Display functions "IMG.ADJ" description:

#### 2. IMAGE: The picture of the img.adj is adjusted.

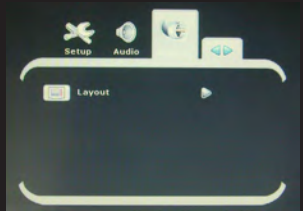
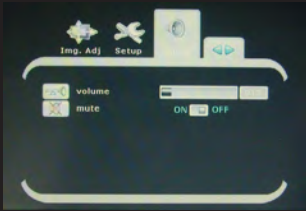
- **Image.SIZE:** Set the display mode to AUTO/FILL ALL/1TO1/NORMAL/ZOOM/WIDE.
- **FREEZE FRAME:** Static picture switch, press the right key to play picture as OFF. Want to pause picture as ON.
- **Horizontal:** Adjust Horizontal position by pressing the Increase (▶)/Decrease (◀) buttons.
- **Vertical:** Adjust Vertical position by pressing the Increase (▶)/Decrease (◀) buttons.



### On Screen Display functions "SETUP" description:

#### 3. SETUP: The picture of the setup is adjusted.

- **SLEEP TEINER:** Automatic shut-down is established. Adjust time that can establish as 30-60-90-120-150-180 minutes of AUDIO menus.
- **OSD SETTINGS:** The menu is adjusted to moved the cursor one, press the right key to enter.
  1. **TRANSPARENCY:** The transparency of the menu is adjusted from 000 to 100 , The greater number value is more transparent.
  2. **OSD TIMEOUT ( S ) :** The menu shows time establishes from 001 to 20 second of AUDIO menus.
  3. **VOLUME:** You can adjust volume from 000 to 100.
  4. **MUTE:** Press once to mute all system audios, As long as the mute function is active, "Mute" will appear on the screen. Press again to turn mute off.



## On Screen Display functions " PIP/POP MENU " description:

- **WINDOW LAYOUT:** To move cursor choice PIP/POP display, Press the Right button to show SINGLE / PIP / POP menu adjustment .
- **MAIN WINDOW SOURCE:** The signal source to switch between COMPAV1, COMPAV2, DIGITAL, ANALOG source.

1.In PIP/POP mode, First press the remote control " ← " enter button then "Green Frame" appears, press Left / Right button to move cursor choice main menu or subsidiary menu. Setting menu adjustment as .the above-mentioned.

2.PIP/POP sound chooses: In PIP/POP AUDIO menu on at showing mode, main menu " AUDIO SOURCE " set up voice of sub picture or main menu input. PRIMARY (main menu sound ), SECONDARY (subsidiary menu sound ). Press the right button in this menu.

3.PIP subsidiary menu is adjusted: In PIP mode, Main menu of SOURCE following PIP ADJUSTMENTS select, Press right button enter set when move this one in cursor.

- **PIP SIZE:** The subsidiary menu show the size adjustment, the range is from 000 to 100. When number value is 000, the subsidiary menu can is 1/10 of the main menu. When number value is 100, the subsidiary menu is 1/5 of the main menu.
- **Adjust Horizontal position in subsidiary menu.** the range is from 000 to 100. When number value is 000, the subsidiary menu move right on the left enter screen left. When number value is 100, the subsidiary menu move on the screen right.
- **Adjust Vertical position in subsidiary menu.** the range is from 000 to 100. When number value is 000, the subsidiary menu move up on the down enter screen down. When number value is 100, the subsidiary menu move on the screen up.
- **ALPHA BLEND :** Adjust transparency phase. the range is from 000 to 100. When number value is 000, the subsidiary menu will be transparency. When number value is 100, the subsidiary menu will not be transparency.
- The screen of PIP/POP show the mode (16: 9/4: 3). The same as the adjustment method of the IMG. ADJ set. (In IMG. ADJ menu adjust )

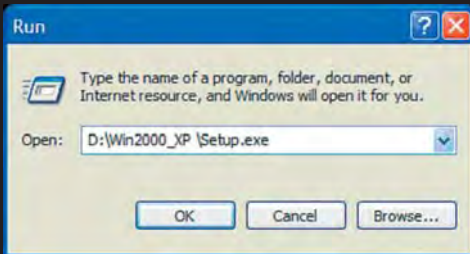


## Installing Touch Screen Driver for 706TSA:

Here is a walk through of Windows XP Touch Driver Installation. For other operating systems, please go to the Document folder on the Driver CD to view the corresponding Touch Driver setup instruction.

### Step1.

Click on Start, Run, and Enter D:\Win2000\_XP \Setup.exe (Please change the drive letter corresponding to the drive containing the installation CD). Click **OK**.

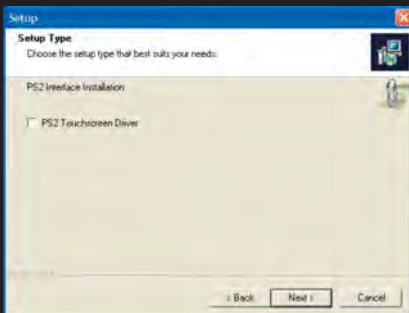


### Step2.

The Install Wizard window appears. Click **Next**.

### Step3.

Click **Next** to continue. Please leave the check box next to "PS2 Touchscreen Driver" **unchecked**.

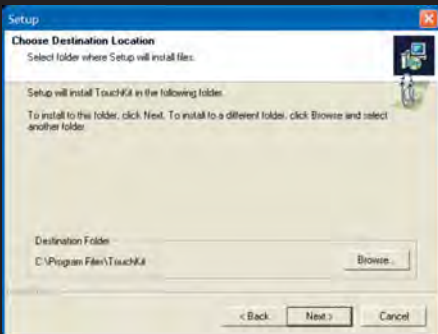


**Step4.**

Select the Rotating Monitor Utility and/or the Shutdown Utility if you want to install them and click on **Next** to continue. The Rotating Monitor Utility allows you to rotate your display while the Shutdown Utility provides you with one-click shutdown.

**Step5.**

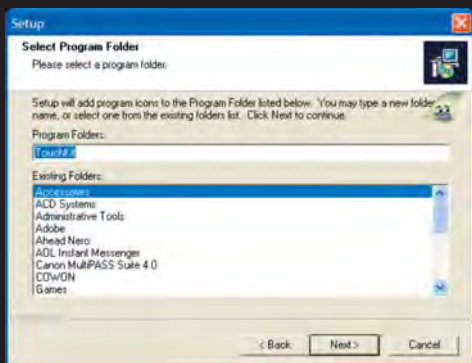
Click **Next** to accept the Destination Directory default, shown below. Click on Browse to change Destination Directory.



## 15 | Software Installation

### Step6.

Click **Next** to accept the Program Folder default, shown below. Files will then start to be copied to your computer.



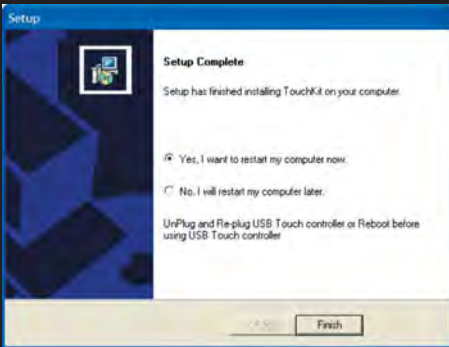
### Step7.

When the warning that says this software has not passed Windows Logo test, please click on **Continue Anyway** to continue the installation. File will continue to be copied to your computer.



**Step8.**

Click **Finish** to finish the installation. You will be asked to restart your computer.

**Step9.**

Remove the CD and **Restart your computer**. After Windows XP is finished loading, connect the 706TSA USB cable to one of your computer's USB Ports.

**Step10.**

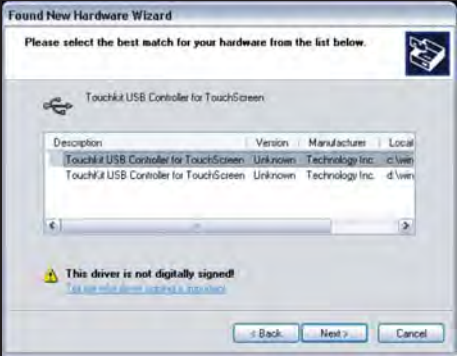
Windows XP will start "Found New Hardware Wizard" automatically upon detection of the USB Touch Controller. Click on **Next** to continue.



# 17 | Software Installation

## Step11.

Click on **Next** to continue.



## Step12.

Click Finish to finish Setup. Your Touchscreen is ready to use now. You can click on the icon **Touchkit** located on your desktop to launch the Touchscreen program for various settings and adjustments.

**NOTE****NOTE 1:**

If you are trying to connect the monitor to a laptop computer, please make sure to enable the 15-Pin D-SUB external monitor output located at the back of your laptop computer. Some laptop computers have three modes: Laptop Display Only, Laptop Display plus External Monitor, and External Monitor Only. If this is the case, please switch to the External Monitor Only mode.

**NOTE 2:**

Touch Screen device driver must be installed onto your computer in order for the Touch Screen to become functional. Uses Resistive Touch Screen panels in the 706TSA monitor. Touch Screen drivers and software for different operating systems can be found in the included CD-ROM disc. You can refer to this manual for a walkthrough of Touch Screen Driver installation under Microsoft Windows XP.

**NOTE 3:**

The maximum voltage supported by the monitor is **24V DC**. Feeding the monitor with higher voltage will damage the monitor and void the warranty. Please use a fused power source if you decide to wire the monitor directly to your car's electrical system. It is also crucial that you check the polarity of the connection.

**NOTE 4:**

If the monitor is not displaying the VGA signal properly, the VGA signal might be out of range. Please try changing your display refresh rate to 60, 70, 72, or 75Hertz.

**NOTE 5:**

Please note that the LCD screen is made with high-precision technology. However, black points or bright points of light (red, blue, or green) may appear constantly on the LCD screen, and irregular colored stripes or brightness may appear on the LCD screen. This is not malfunction. (Effective dots: more than 99.999%)

**For Technical Support, please contact us at:**

## Owner's Records

The model and serial numbers are located on the rear of the unit. Please record these numbers in the spaces provided below, as well as the dealer name, address, and telephone number. Please refer to these records whenever speaking to your dealer regarding this product.

Model Number: \_\_\_\_\_

Serial Number: \_\_\_\_\_

Dealer Name: \_\_\_\_\_

Street Address: \_\_\_\_\_

City: \_\_\_\_\_

State: \_\_\_\_\_

Zip: \_\_\_\_\_

Phone Number: \_\_\_\_\_

Purchase Date: \_\_\_\_\_